

Amsterdam Satellite of Cochrane Work Launch

Dr. Lotty Hooft
Director Cochrane Netherlands

September 6, 2019

Trusted evidence.
Informed decisions.
Better health.



Congratulations

Trusted evidence.
Informed decisions.
Better health.



Welcome in the Netherlands

Public Health and Health Systems (CRG Network)

- Consumers and Communication
- Effective Practice and Organisation of Care
- Infectious Diseases
- Public Health
- Tobacco Addiction

•Work



Canada

United States

Review Groups

South Pacific Ocean

Stepped Group

Consumer Network

Argentina

Africa

Россия
Russia

Mongolia

China

대한민국
S. Korea

日本
Japan

Indonesia

Papua New Guinea

Australia

New Zealand

Center UMC Utrecht

Role of Centres (Geographic Groups)

25th Anniversary Cochrane Netherlands



25 Years



Our directors during 25 years of Cochrane Netherlands

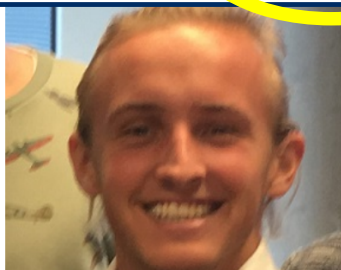
maintain an
policy programme

users of
ence

To host local events

Kevin Bengtsson

Kevin is a junior medical doctor from Lund University. He did his CIM training at **Cochrane Netherlands** in 2018 for 3 weeks, followed by 17 weeks at our Centre. During this period, he completed a review on neonatal pain scales. The protocol is available [here](#). He is a co-author of an abstract to the 3rd joint European Neonatal Societies conference (September 2019, Maastricht, Netherlands).



Cochrane International Mobility

Methodological research: *examples*

Study conduct: Risk of Bias / Applicability

- QUADAS-2 (diagnostic studies)
- PROBAST (prediction models) / Design related bias
- QUIPS (prognostic factor studies)

Study report: Guidelines for complete information

- STARD (diagnostic studies) / Adherence
- TRIPOD (prediction models) / Adherence





COLLABORATION



Facing future challenges together

- Increasing evaluation of **complex interventions**
 - Complex methodology
- Movement towards **precision medicine**
 - Individual strategies (“treatment”/testing)
- Clinical practice is not only about treatment & diseased
 - **Prevention** and well-being
- Movement towards efficient **review production**
- Primary research of **poor quality**



Why?

- Trusted evidence
- To inform decisions
- To improve health

➤ **How do we provide that trusted evidence in this changing climate ?**



Cochrane Work: *examples*

- Collecting data (related to health and wellbeing)
 - Social activity (online and real-life)
 - Physical activity
 - Sleep pattern
 - Heart rate



How? Cochrane Work: *examples*

- Prevention of occupational and work-related diseases
- Prevention of burn-out

➤ Predict individuals at-risk
(also using other types of data
collection / data sources)

➤ **New (review) methods**



What?

- Produce high quality reviews
 - Evaluating complex interventions
 - Evaluating diagnostic test
 - Evaluating prognostic factors and prediction models
- Train reviewers
- Improve primary research (e.g. core outcome set)
- Knowledge translation (e.g. bNFU: *think globally, act locally*)

➤ **Close collaboration within the Netherlands**



Thank you

Cochrane@umcutrecht.nl

25th Anniversary Cochrane Netherlands



25 Years



Our directors during 25 years of Cochrane Netherlands

Symposium
Increasing value of research in healthcare
25th anniversary of Cochrane Netherlands
4 October 2019

